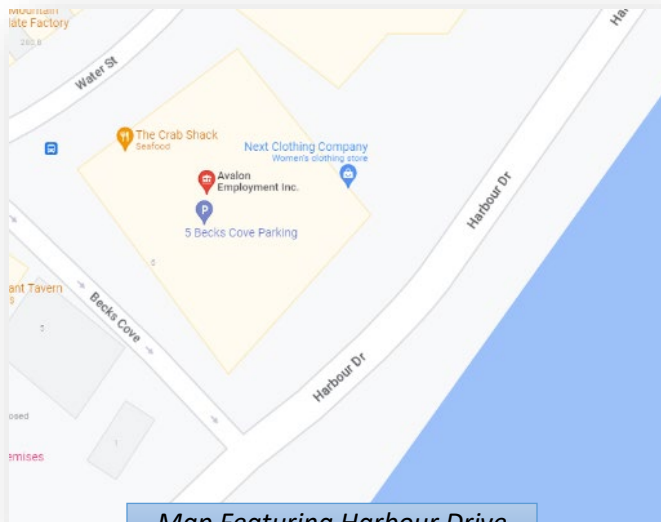


How to Get Here – Harbour Drive Entrance

Avalon Employment Inc.

277 Water Street, Suite 301, St. John's, NL



Step 1

Heading East (Towards Signal Hill): Get onto Harbour Drive. Your turn will be on the left-hand side, after "Becks Cove".

Heading West: Get onto Harbour Drive. Your turn will be on the right-hand side when you see the Bowring Building. If you have passed the Keg and Jack Astor's, you've gone too far.

Step 2

Turn onto the outdoors ramp of the Bowring Building.

This will take you to the parking area directly next to the Avalon Employment entrance.





Avalon Employment Entrance

Step 3

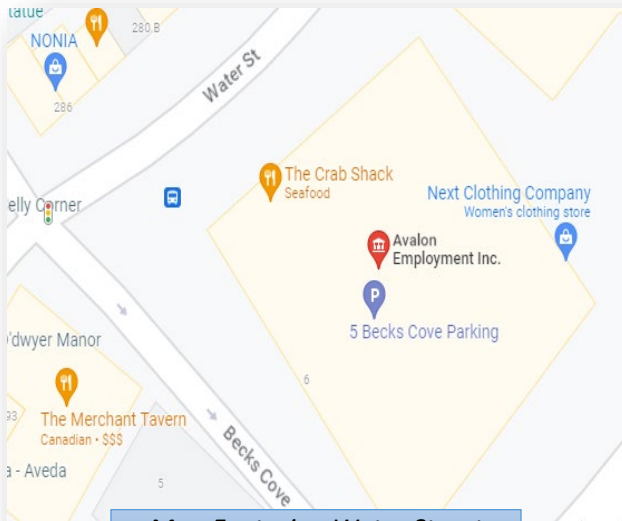
Enter the building through the glass doors with the wheelchair ramp.

The Avalon Employment office is located directly inside on your right. Please ring the doorbell to let staff know you have arrived. We will provide you with a parking pass.

How to Get Here – Water Street Entrance

Avalon Employment Inc.

277 Water Street, Suite 301, St. John's, NL



Step 1

Whether you're taking the bus or parking on Water Street, head towards 277 Water Street aka the Bowring Building.

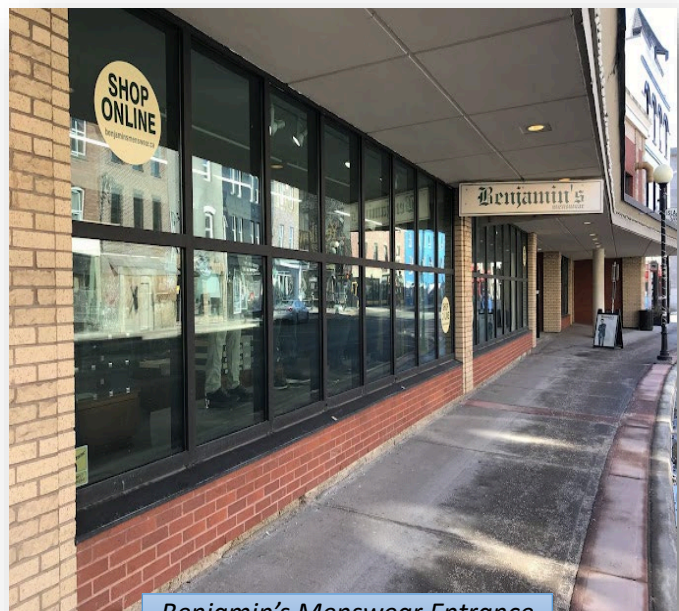
The Bowring Building is situated right after Becks Cove but before you reach Scotiabank (the building made of glass).

Step 2

Enter the building using the main entrance to the Bowring Building by Benjamin's Menswear.

This will take you into a lobby. You can then make your way towards either the stairs or the elevator.

For wheelchair users, before reaching the main elevator, there is a separate elevator to the left of the first staircase.





Step 3

Head to the third floor via the stairs or the elevator. They are located next to each other.

If you take the elevator, the Avalon Employment office is located directly on your left. If you take the stairs, the office is located straight ahead once you reach the third floor.

Please ring the doorbell to let staff know you have arrived.